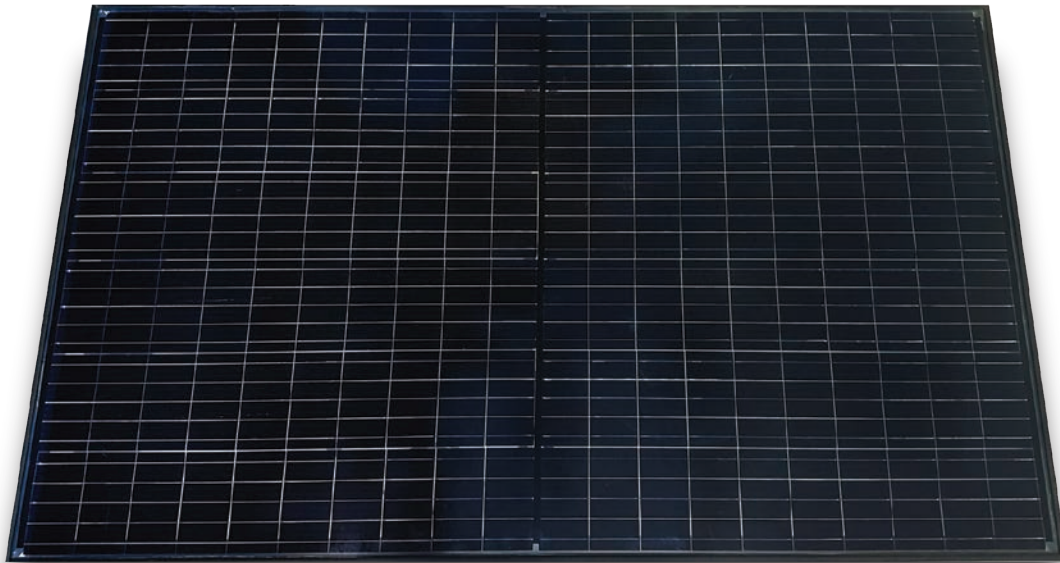


# DNA-120

ALL-BLACK BI-FACIAL DESIGN

330W | 325W | 320W



## Maximize Energy Production

High-efficiency, Bi-facial half-cut cell panel



Produce up to 30% more energy with rear-side generation



Designed & engineered for extreme weather  
5400 Pa snow load  
5400 Pa (210 mph) wind load



All-black design for pristine aesthetics



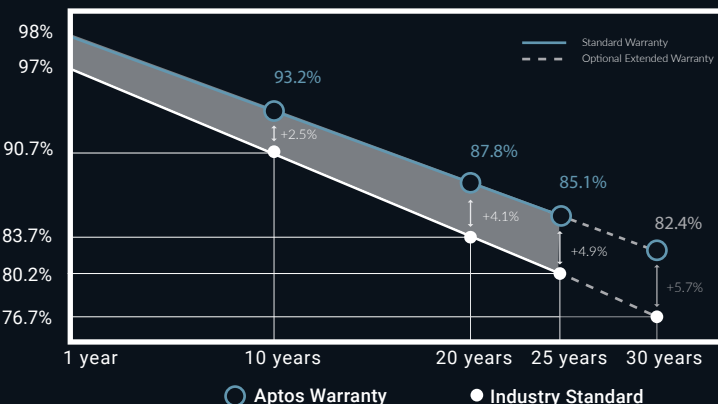
25 year extended product warranty\*  
30 year extended peak power warranty\*

Our DNA Half-cut Cell Series impressively combines advanced technologies to maximize performance. Produce up to 30% more energy with the bi-facial rear side generation. Our patented DNA, Dual Nano Absorber, technology allows for panel to harvest energy from all directions and operate exceptionally in high heat temperatures.

\*Aptos Solar Technology solar panels come with a standard 15 product warranty and 25 year peak power warranty. Customers must select optional warranty upgrade package to qualify extended 25 year product warranty and extended 30 year peak power warranty.

[www.aptosolar.com](http://www.aptosolar.com) | [info@aptossolar.com](mailto:info@aptossolar.com)

### Linear Performance Warranty

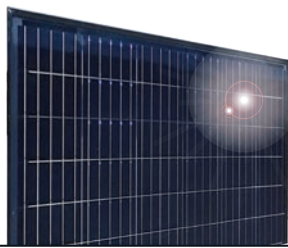


### Factory Certifications



### Product Certifications





# DNA-120

BLACK FRAME, TRANSPARENT BACKSHEET  
HIGH EFFICIENCY, BI-FACIAL HALF-CUT CELL PANEL



## ELECTRICAL SPECIFICATIONS (+3%/-0%)

	DNA-120-BF23-320W	DNA-120-BF23-325W	DNA-120-BF23-330W
STCrated output $P_{mpp}$ (W)	320	325	330
Module Efficiency	18.85%	19.13%	19.43%
Open Circuit Voltage $V_{oc}$ (V)	40.21	40.3	40.39
Short Circuit Current $I_{sc}$ (A)	10.06	10.15	10.25
Rated Voltage $V_{mmp}$ (V)	32.96	33.1	33.24
Rated Current $I_{mmp}$ (A)	9.73	9.82	9.93

Standard Test Conditions for front-face of panel:  
1000 W/m<sup>2</sup>, 25 °C, measurement uncertainty  $\leq 3\%$

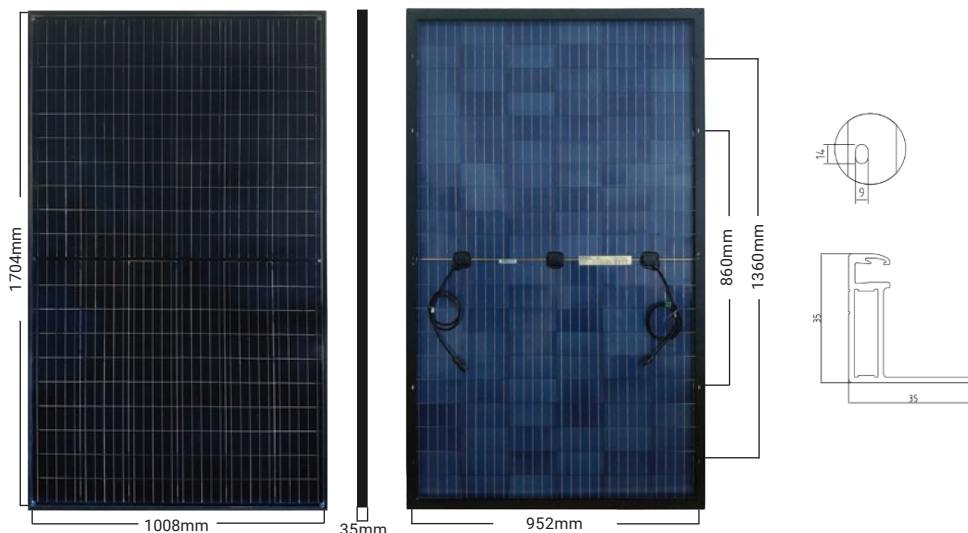
## TEMPERATURE COEFFICIENTS

Temperature Coefficients $P_{mpp}$	-0.36%/°C
Temperature Coefficients $I_{sc}$	+0.046%/°C
Temperature Coefficients $V_{oc}$	-0.306%/°C
Normal Operating Cell Temperature (NOCT)	45 °C

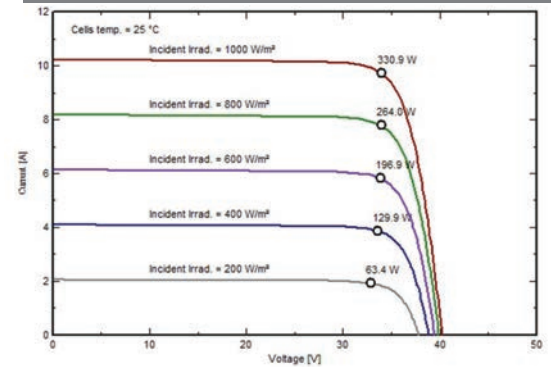
## TEST OPERATING CONDITIONS

Maximum Series Fuse	20A
Maximum System Voltage	1,500 VDC (UL&IEC)
Maximum Load Capacity (Per UL1703)	Front Load: 5400 PA Snow load / 113 PSF / 2052 lbs. Rated Load Rear Load: 5400 PA Wind load / 113 PSF / 210 MPH Rated Load
Fire Performance Class	Class C/Type 1

## MODULE DIMENSIONS



## I-V CURVE



## BI-FACIAL OUTPUT

$P_{mpp}$ (W) at STC	330	335	340
Bi-facial Boost 5%	342	347	352
Bi-facial Boost 10%	353	358	364
Bi-facial Boost 15%	365	370	376

## MECHANICAL PROPERTIES

Cell Type	Monocrystalline
Glass	Low Iron, Tempered
Frame	Anodized Aluminum Alloy
Junction Box	IP67
Dimension	1704 x 1008 x 35 mm
Output Cable	4mm <sup>2</sup> (EU)12AWG, 39.37in(1000mm)
Weight	43.0lbs.(19.5kg)
Cable Length	1200mm

## PACKAGING CONFIGURATION

Number of Modules per Pallet	30
Number of Pallets per 40ft HQ Container	26
Pallet Dimensions (mm)	1720X 1140 X 35
Pallet weight (kg)	620
Container weight (kg)	16120

Aptos Solar Technology reserves the right to make specification changes without notice

8207 Callaghan Rd, Ste. 100  
San Antonio, Texas 78230  
www.aptosolar.com | info@aptossolar.com

DNA-120-BF23-XXXW  
RESIDENTIAL | COMMERCIAL